

Life 60 on a 70cm Reservoir Installation Diagram.

Please read all instructions before commencing installation

Warning Heavy Stone. Take care when lifting, if unsure consult a specialist.

Dig the hole in preparation for the reservoir installation. Approximately 51 cm deep from the top of ground level down. See Diagram A.

Note if paving is required to over lap or be higher than the grill simply increase the hole depth by the cm's required.

The concrete footing base must be level and should be a minimum of 12cm deep. Allow the concrete footing base to dry for **24 hours**. A thin layer of sand on the concrete footing will protect the reservoir from puncturing.

Set up the reservoir so that the top of the reservoir is level with the required surrounding ground or paving. A little extra sand can help bring up the level if need be.

Fill the reservoir with water before backfilling around the outside with wet concrete. This will prevent the reservoir from moving before the concrete dries. See diagram B. Backfill around the reservoir with wet concrete.

Place grill on reservoir, then insert pump into reservoir, and feed power cable up and through to the required power supply (**see note**).

Place the delivery pallet close to the installed reservoir remove 5 sides of the Life box with a screw driver, leaving 1 side between the Life the pallet. Use one side of the box as a ramp to carefully roll the Life down from the pallet into position on the reservoir. (2 men are required). Use padding to protect edges.

If Luminar Version feed LED power cable down through hole in Life then up and out to the power supply. One end of the water pipe will have a connector in it this must connect to the back of the LED. Connect the other end to the pump via access hatch. Push the light fitting down into the recess.

If Non Luminar feed water pipe down through the hole in the Life base, connect the nozzle, a small amount of foam packaging can be packed around the nozzle if hole is slightly larger than nozzle, alternatively if hole is smaller, nozzle can be trimmed to fit. Connect pipe to pump via access hatch.

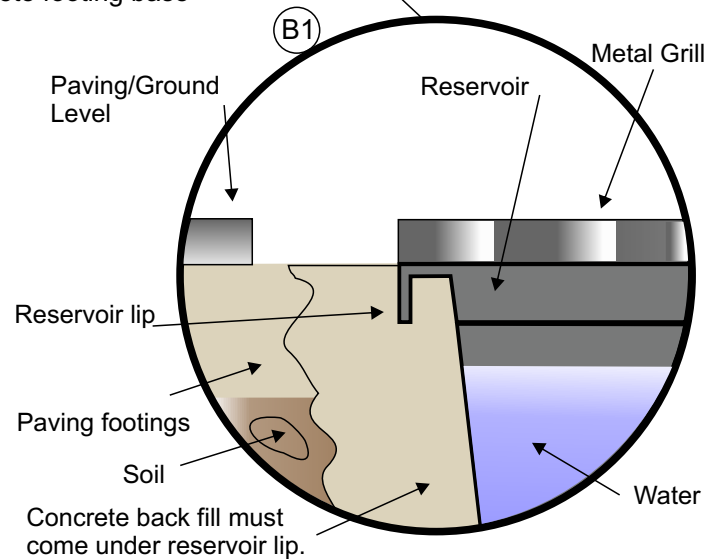
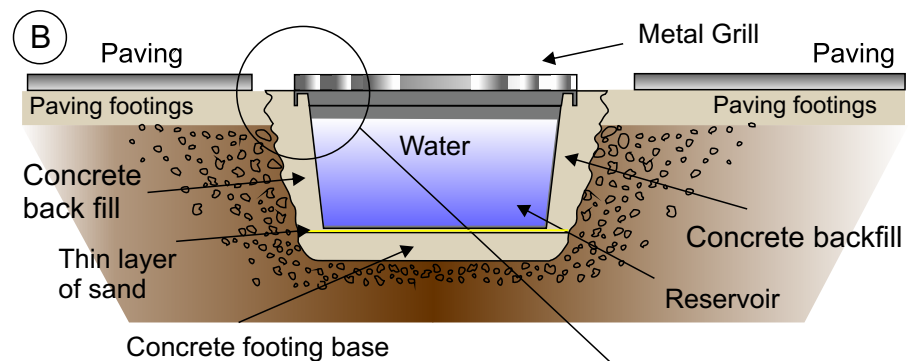
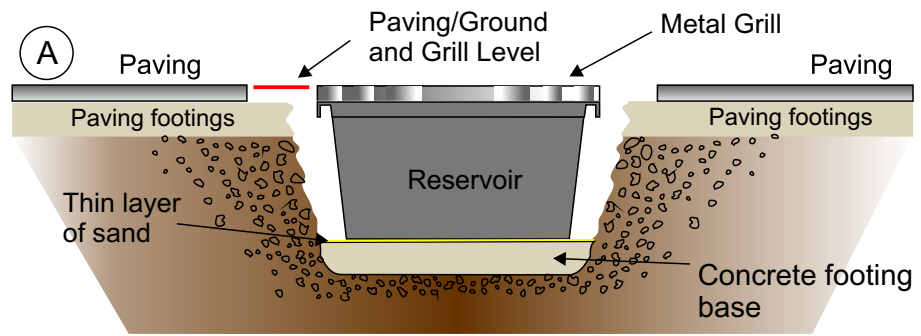
Finally dress the reservoir with pebbles. The pump can be adjusted to the required flow rate of water.

Important Notes:- Allow the concrete footing base to dry for **24 hours**.

Wet concrete mix must be used when back filling to ensure the concrete fills up and under the reservoir lip. This is to help support the weight of the water feature. See Diagram B1.

We recommend running the pump cable through an under ground pipe from the feature to the power supply.

WARNING NOTE. Stone features are **heavy**. Take extra care when moving them.



Complete Installation. See Diagram C.

